

Registration now open!
23-24 October 2019
LRZ Garching, Germany

First International Symposium on Open Search Technology

Main themes

- Large-scale distributed databases
- Web Science
- Content analysis / mining / retrieval
- Open source technology generally related to web search
- SEO
- Business models
- Crawling
- Indexing
- Next generation Search interfaces / Accessible search
- Artificial intelligence in web search
- Next generation internet
- Performance and scale in web search
- Distributed operating systems
- Cloud / cluster security
- Geo Search

Regular updates at opensearchsymposium.org.
Info & Questions: info@opensearchsymposium.org

Best Regards,
Your Open Search Symposium 2019 Organizing Committee

Chair: Prof. Dr.-Ing. Nils Jensen, Ostfalia University of Applied Sciences
Dr. Stefan Voigt, open search foundation
Dr. Andreas Wagner, CERN
Prof. Dr. Dieter Kranzlmüller, LRZ

Local
organizer



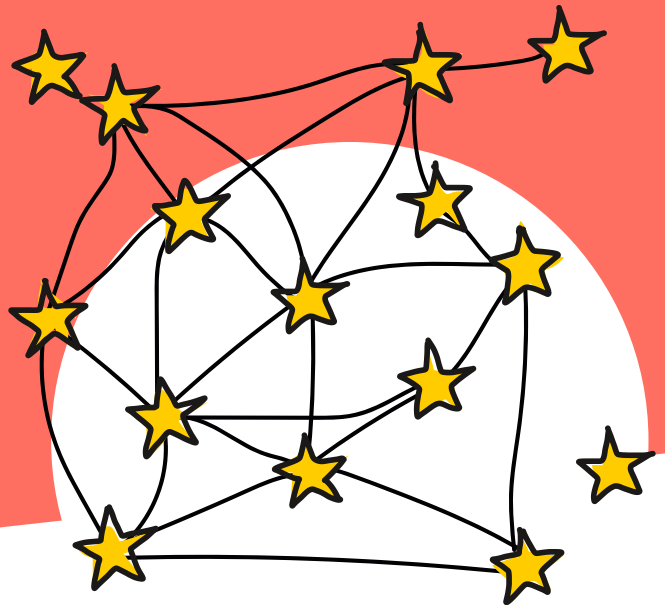
List of Sponsors

open search foundation (osf)
Leibniz-Rechenzentrum d. Bayerischen
Akademie der Wissenschaften
Ostfalia University of Applied Sciences
SUMA-EV - Verein für freien
Wissenszugang

Together, for a better net

The Open Search Foundation e.V. is a movement of people and organisations that work together to create the foundations for independent, free and self-determined access to information on the Internet. As a registered non-profit and in collaboration with research institutions, computer centres and other partners, we're committed to searching the web in a way that benefits everyone.

First International Symposium on Open Search Technology Programme

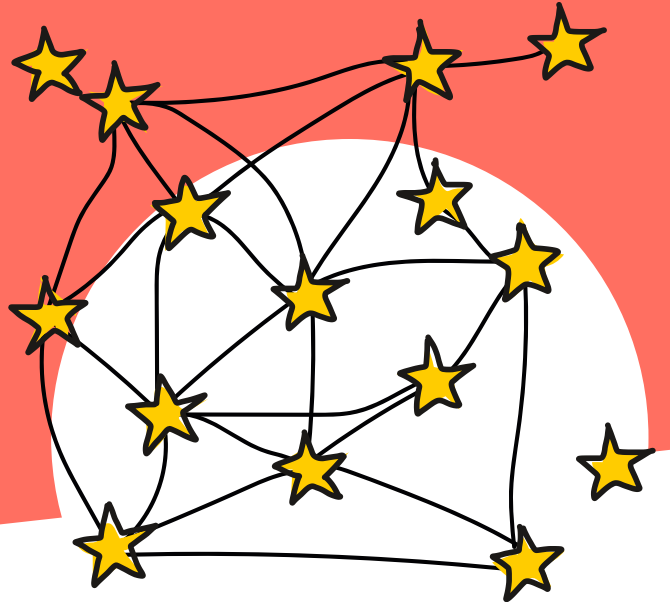


Day 1 23 October

- 9.00 Welcome Desk opens**
- 11.00 Conference Registration and Reception**
- 12.00 Welcome Address** by the Organizers + Outline Day 1+2
- 12.30 Keynote: Dirk Lewandowski (HAW Hamburg)**
„The need for and fundamentals of an Open Web Index“
- 13.15 Group Photo and Lunch**
- 13.45 Pablo Panero, Andreas Wagner (CERN)**
„Citadel Search: Open Source Enterprise Search“
- 14.05 Hachinger et al (LRZ et al):**
„The LEXIS approach to Searching and Managing FAIR Research Data in Converged HPC-Cloud-Big Data Architectures“
- 14.25 Coffee Break and Poster Session**
- 14.45 Keynote: Marco Verile (EC/JRC - EMM)**
„The Europe Media Monitor – Web Text Mining for News“
- 15.30 Anna Carolina Gröhn (HAW Hamburg):**
„Explizite und implizite Theorien von Schülerinnen und Schülern über die algorithmischen Sortierprozesse von Informationsintermediären“
- 15.50 Phil Höfer (Univ. Hannover)**
„Websuche als Zero-Knowledge-Dienst“
- 16.10 Keynote: Michael Christen (YaCy/Grid)**
„Search Engines, AI and YaCy Grid“
- 16.55 Weber et al (LRZ)**
„Let the Data Sing‘ A Lightweight, Microservice-Based Research Data Management Architecture for Large Scale Datasets“
- 17.15 Joost Agterhoek (NLnet Foundation)**
„NGI Zero Discovery“
- 17.30 End of DAY 1**

19.00
Optional: Bavarian Dinner
(Self-Payment, Open End)

First International Symposium on Open Search Technology Programme



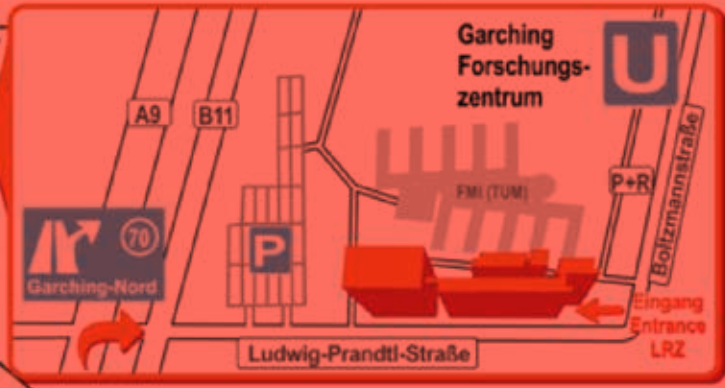
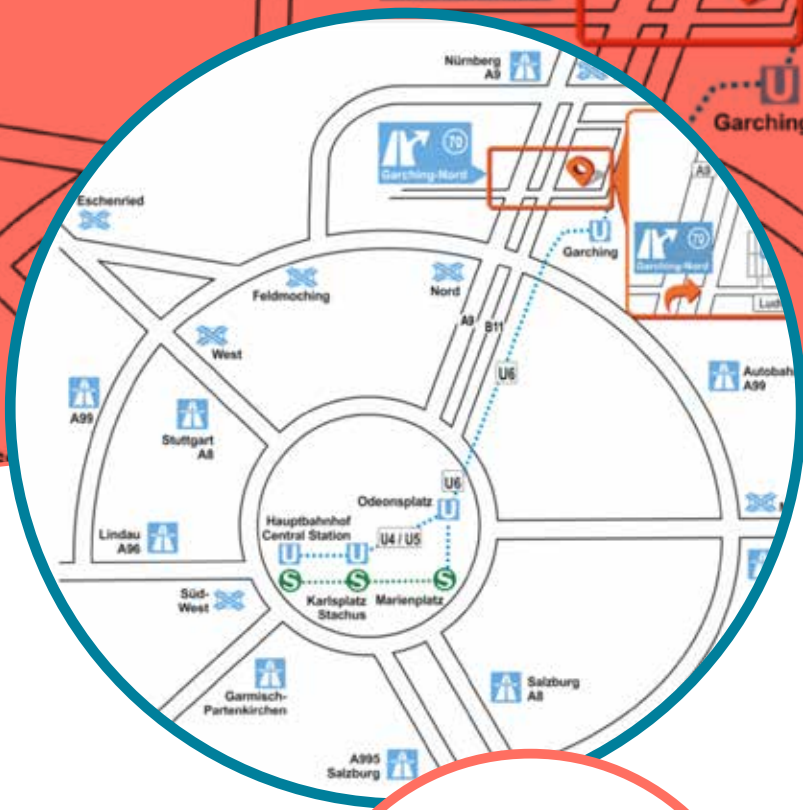
Day 2 24 October

- 9.00 Track 1: **Workshop European Wide Project**
Track 2: **Barcamps**
- 11.00 Track 1: **Visualisation Show**
Track 2: **Guides Tour Super-MUC**
- 12.00 **Summary**
Farewell
- 12.30 **End of Day 2 / End of Venue**





open search
foundation



Venue
Leibniz-Rechenzentrum
der Bayerischen Akademie
der Wissenschaften
Boltzmannstraße 1
85748 Garching (Munich)

How to get there

By Public Transport

From the main station:
Take U4/U5 to Odeonsplatz, then U6 direction Garching Forschungszentrum.

From the airport:

S-Bahn S8 (direction Hauptbahnhof) to the third stop, Ismaning (about 13 minutes). Take the regional bus 230 in the direction of Garching-Forschungszentrum, stop Boltzmannstraße.

Important note: The bus line 230 bypasses the research site only in one direction. To save you long waiting times, we recommend leaving the bus at the Garching-Forschungszentrum stop for the return journey in the direction of Ismaning.

From the S-Bahn area:

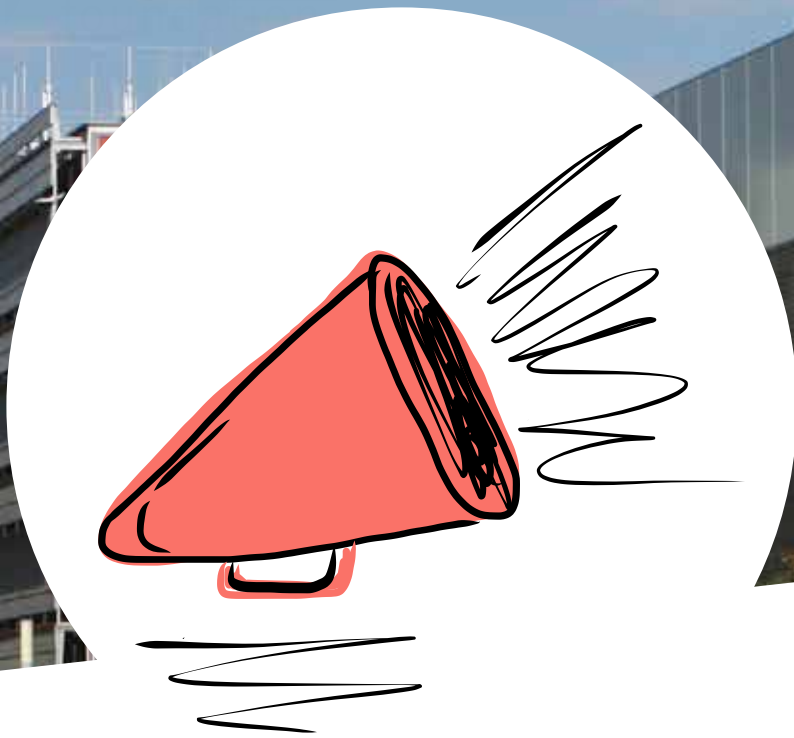
with all S-Bahn trains to Marienplatz, there in U6 direction Garching-Forschungszentrum.

By taxi

from airport: approx. 20-30 min., 30-40 Euro
from Ismaning: approx. 10 min., 12-15 Euro
from the city centre: approx. 20-30 min.: 25-35 Euro

By car

From the south (e.g. Munich) as well as from the north (e.g. airport) preferably the motorway (A9) to the exit Garching Nord (exit 70). After the exit (either right or left) in the direction of research institutes, cross the intersection with the B11 and turn into Ludwig-Prandtl-Straße. Parking spaces are available on the left. The LRZ computer cube can be seen from a distance.



Registration now open!
23-24 October 2019
LRZ Garching, Germany

First International Symposium on Open Search Technology

Main themes

- Large-scale distributed databases
- Web Science
- Content analysis / mining / retrieval
- Open source technology generally related to web search
- SEO
- Business models
- Crawling
- Indexing
- Next generation Search interfaces / Accessible search
- Artificial intelligence in web search
- Next generation internet
- Performance and scale in web search
- Distributed operating systems
- Cloud / cluster security
- Geo Search

Regular updates at opensearchsymposium.org.
Info & Questions: info@opensearchsymposium.org

Best Regards,
Your Open Search Symposium 2019 Organizing Committee

Chair: Prof. Dr.-Ing. Nils Jensen, Ostfalia University of Applied Sciences
Dr. Stefan Voigt, open search foundation
Dr. Andreas Wagner, CERN
Prof. Dr. Dieter Kranzlmüller, LRZ

Local
organizer

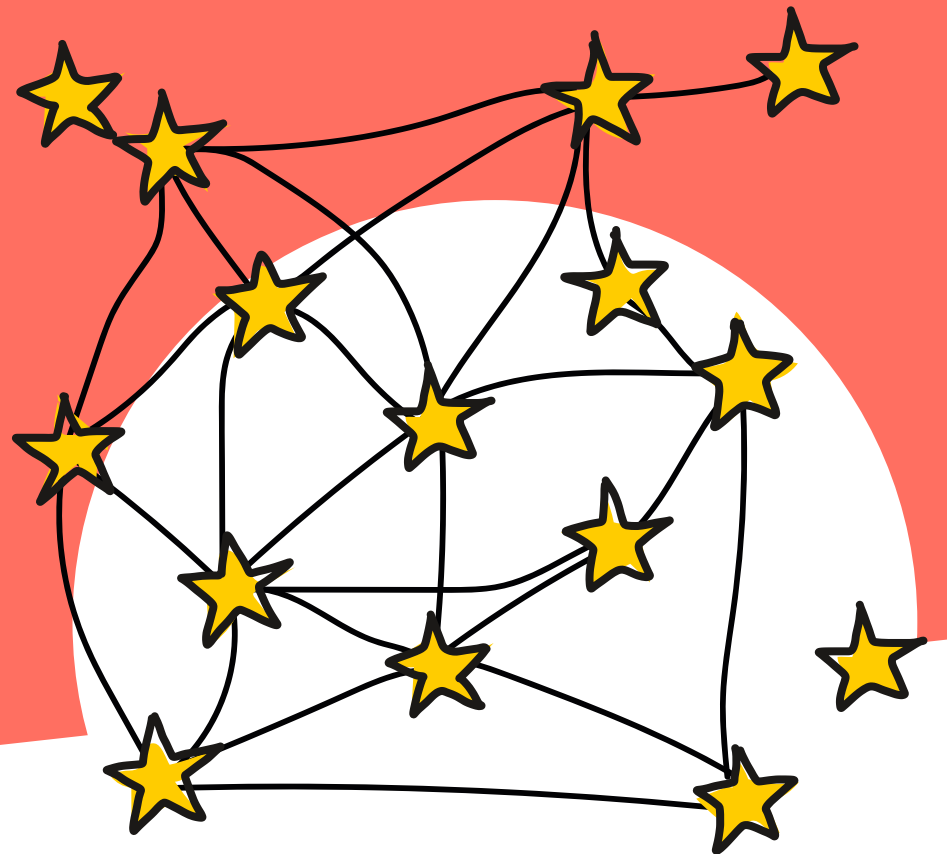


List of Sponsors

open search foundation (osf)
Leibniz-Rechenzentrum d. Bayerischen Akademie der Wissenschaften
Ostfalia University of Applied Sciences
SUMA-EV - Verein für freien Wissenszugang



First International Symposium on Open Search Technology Programme



Day 1 23 October

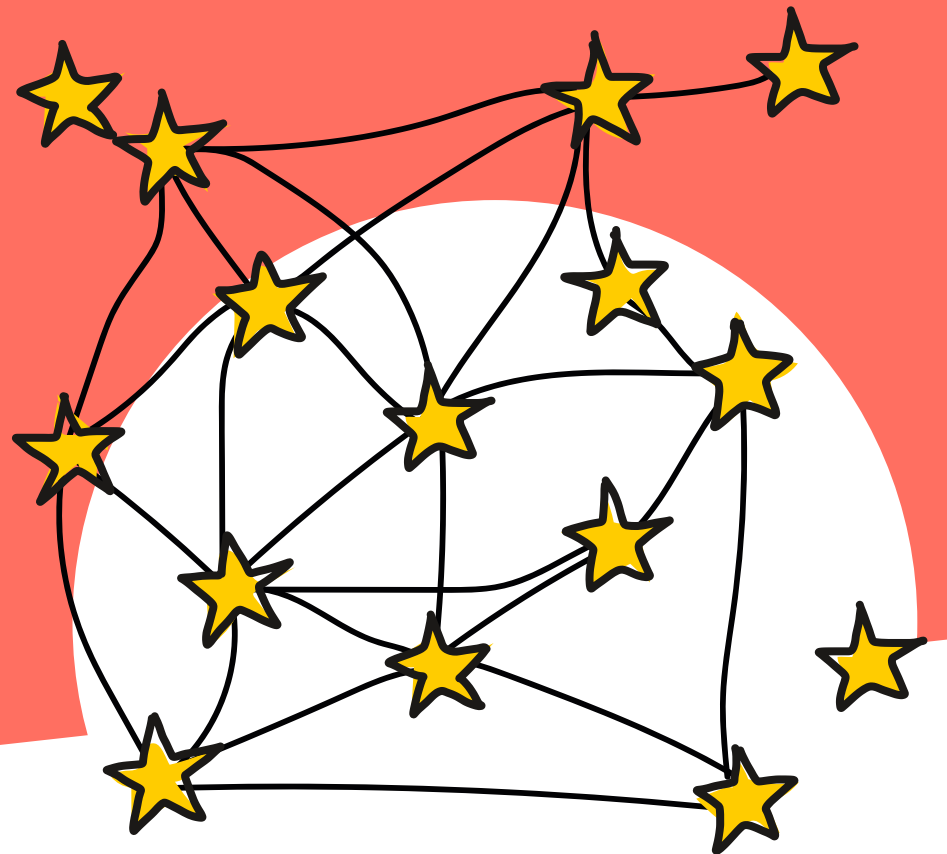
- 9.00 Welcome Desk opens**
- 11.00 Conference Registration and Reception**
- 12.00 Welcome Address** by the Organizers + Outline Day 1+2
- 12.30 Keynote: Dirk Lewandowski (HAW Hamburg)**
„The need for and fundamentals of an Open Web Index“
- 13.15 Group Photo and Lunch**
- 13.45 Pablo Panero, Andreas Wagner (CERN)**
„Citadel Search: Open Source Enterprise Search“
- 14.05 Hachinger et al (LRZ et al):**
„The LEXIS approach to Searching and Managing FAIR Research Data in Converged HPC-Cloud-Big Data Architectures“
- 14.25 Coffee Break and Poster Session**
- 14.45 Keynote: Marco Verile (EC/JRC - EMM)**
„The Europe Media Monitor – Web Text Mining for News“
- 15.30 Anna Carolina Gröhn (HAW Hamburg):**
„Explizite und implizite Theorien von Schülerinnen und Schülern über die algorithmischen Sortierprozesse von Informationsintermediären“
- 15.50 Phil Höfer (Univ. Hannover)**
„Websuche als Zero-Knowledge-Dienst“
- 16.10 Keynote: Michael Christen (YaCy/Grid)**
„Search Engines, AI and YaCy Grid“
- 16.55 Weber et al (LRZ)**
„‘Let the Data Sing’ A Lightweight, Microservice-Based Research Data Management Architecture for Large Scale Datasets“
- 17.15 Joost Agterhoek (NLnet Foundation)**
„NGI Zero Discovery“
- 17.30 End of DAY 1**

19.00
Optional: Bavarian Dinner
(Self-Payment, Open End)



open search
foundation

First International Symposium on Open Search Technology Programme



Day 2 24 October

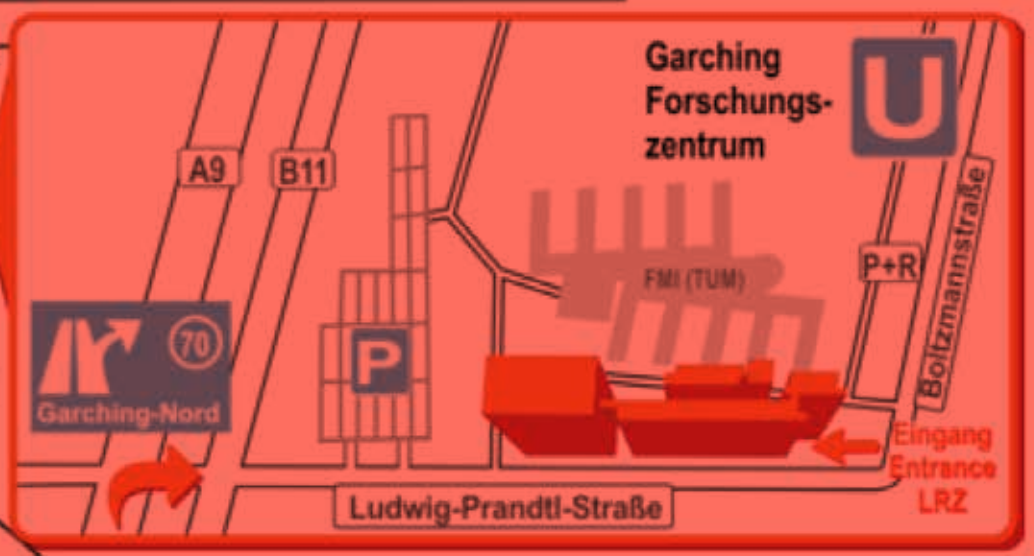
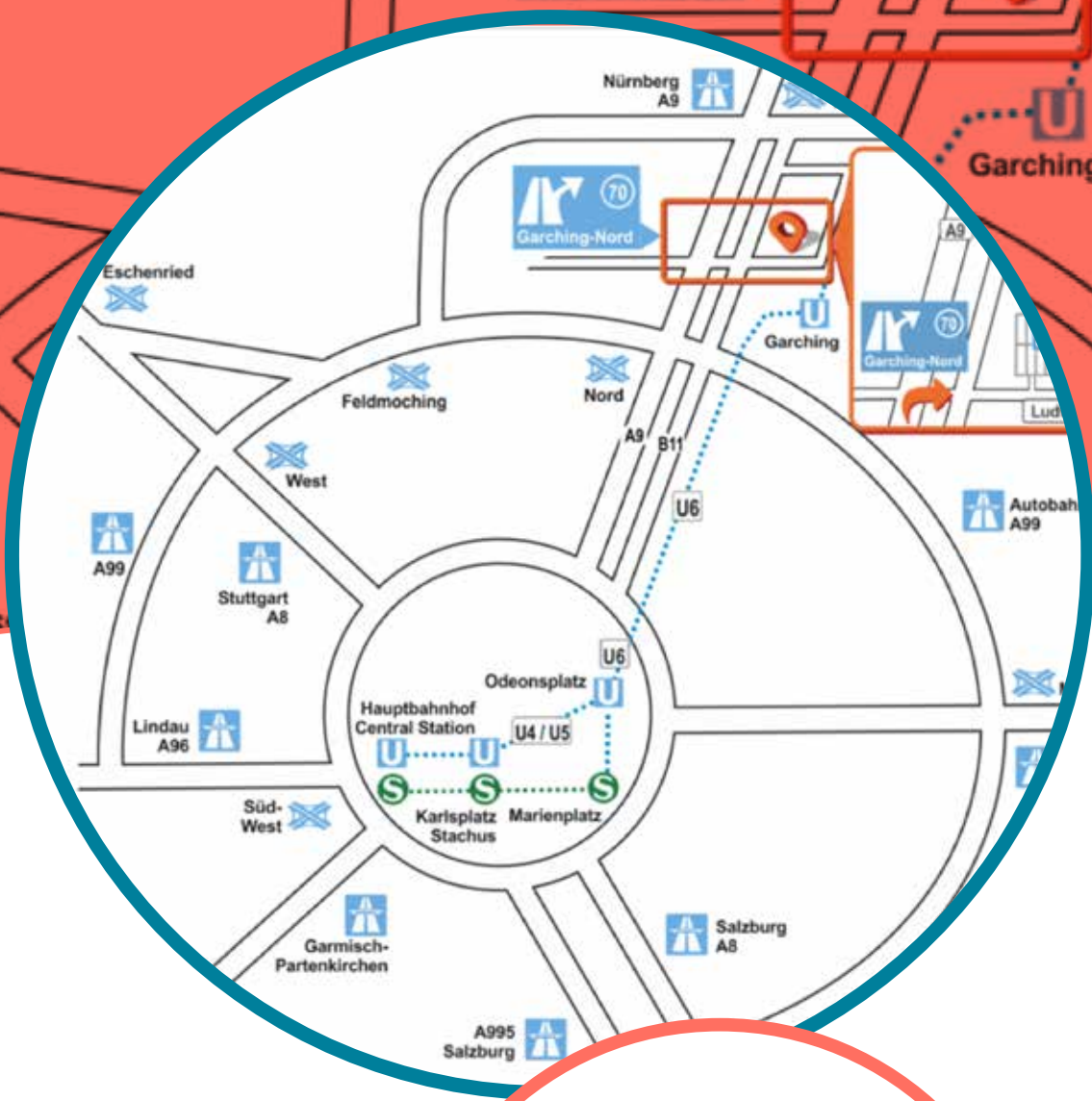
- 9.00 Track 1: **Workshop European Wide Project**
Track 2: **Barcamps**
- 11.00 Track 1: **Visualisation Show**
Track 2: **Guides Tour Super-MUC**
- 12.00 **Summary**
Farewell
- 12.30 **End of Day 2 / End of Venue**

Please make sure to bring
your ID for the
Super-MUC-tour!

Please note:
All Talks may be hold in English unless otherwise communicated.



open search
foundation



Venue

Leibniz-Rechenzentrum
der Bayerischen Akademie
der Wissenschaften
Boltzmannstraße 1
85748 Garching (Munich)

How to get there

By Public Transport

From the main station:
Take U4/U5 to Odeonsplatz, then U6 direction Garching Forschungszentrum.

From the airport:

S-Bahn S8 (direction Hauptbahnhof) to the third stop, Ismaning (about 13 minutes). Take the regional bus 230 in the direction of Garching-Forschungszentrum, stop Boltzmannstraße.

Important note: The bus line 230 bypasses the research site only in one direction. To save you long waiting times, we recommend leaving the bus at the Garching-Forschungszentrum stop for the return journey in the direction of Ismaning.

From the S-Bahn area:

with all S-Bahn trains to Marienplatz, there in U6 direction Garching-Forschungszentrum.

By taxi

from airport: approx. 20-30 min., 30-40 Euro
from Ismaning: approx. 10 min., 12-15 Euro
from the city centre: approx. 20-30 min: 25-35 Euro

By car

From the south (e.g. Munich) as well as from the north (e.g. airport) preferably the motorway (A9) to the exit Garching Nord (exit 70). After the exit (either right or left) in the direction of research institutes, cross the intersection with the B11 and turn into Ludwig-Prandtl-Straße. Parking spaces are available on the left. The LRZ computer cube can be seen from a distance.